

West Saanich Rd between Royal Oak Dr and Markham St

April 01, 2019 To April 05, 2019



The data presented here is for information purposes only and should not be considered authoritative for construction, geotechnical, engineering, navigational, legal, or other site-specific uses. The information shared is owned by the Transportation Division of the Engineering Department at the District of Saanich. Accuracy is not guaranteed.

Start Date: 1-Apr-19
 Start Time: 0:01
 Station ID: M0040-10

Location 1: West Saanich Rd between Royal Oak Dr and Markham St

Note: Royal Oak Dr and Markham St

DATE:	April 1, 2019		April 2, 2019		April 3, 2019		April 4, 2019		April 5, 2019		WK AVG		WK AVG	HOURLY
	MON		TUE		WED		THURS		FRI		NB		CH 1+2	%
Time:	NB	SB	NB	SB	NB	SB	NB	SB	NB	SB	NB	SB		
12-1 AM			16	8	18	11	17	6			17	8	25	0.2%
1-2 AM			7	4	8	2	3	5			6	4	10	0.1%
2-3 AM			3	2	4	4	3	2			3	3	6	0.0%
3-4 AM			8	7	3	3	3	3			5	4	9	0.1%
4-5 AM			8	14	11	16	14	15			11	15	26	0.2%
5-6 AM			40	50	34	50	31	53			35	51	86	0.5%
6-7 AM			174	186	162	175	179	178			172	180	351	2.2%
7-8 AM			502	604	507	556	483	578			497	579	1077	6.7%
8-9 AM			724	725	745	739	712	708			727	724	1451	9.0%
9-10 AM			520	474	498	481	468	505			495	487	982	6.1%
10-11 AM			479	454	439	465	444	468			454	462	916	5.7%
11-12 PM			483	528	414	526	468	488			455	514	969	6.0%
12-1 PM			496	535	492	551	493	526			494	537	1031	6.4%
1-2 PM			510	465	463	487	471	510			481	487	969	6.0%
2-3 PM			544	544	558	548	554	539			552	544	1096	6.8%
3-4 PM			627	802	674	757	762	882			688	814	1501	9.3%
4-5 PM			866	872	845	841	976	855			896	856	1752	10.9%
5-6 PM			831	654	800	630	851	708			827	664	1491	9.2%
6-7 PM			419	367	403	340	445	401			422	369	792	4.9%
7-8 PM			316	320	303	279	346	325			322	308	630	3.9%
8-9 PM			252	215	184	188	264	277			233	227	460	2.9%
9-10 PM			181	116	161	130	171	173			171	140	311	1.9%
10-11 PM			99	54	81	34	90	49			90	46	136	0.8%
11-12 AM			31	11	38	13	36	27			35	17	52	0.3%
LANES			8136	8011	7845	7826	8284	8281			8088	8039	16128	100.0%
TOTAL			16147		15671		16565				16130			
	MON		TUE		WED		THURS		FRI		WK AVG			

PEAK HOUR					TOTAL VEHICALS-PEAK PERIODS		2 HOUR PEAK INTERVALS						
MAX. 7 - 9 am PEAK HOUR	1451	⇒	9.0%	between	8-9 AM	7771	⇒	6 HR TOTAL	2 HR AM (7 - 9 AM)				
MAX. 7 - 11 am PEAK HOUR	1451	⇒	9.0%	between	8-9 AM	5771	⇒	4 HR TOTAL	VEH / HR	VEH / 2HR	2 HR %		
									7-8 AM	1077	2528	15.7%	
									8-9 AM	1451			
MAX. 11 am - 1 pm PEAK HOUR	1031	⇒	6.4%	between	12-1 PM	24 HOUR FACTORS							
MAX. 11 am - 3 pm PEAK HOUR	1096	⇒	6.8%	between	2-3 PM								
MAX. 4 - 6 pm PEAK HOUR	1752	⇒	10.9%	between	4-5 PM								
MAX. 3 - 6 pm PEAK HOUR	1752	⇒	10.9%	between	4-5 PM	2.08	⇒	6-24 HR FACT.	2 HR NOON (11 - 1 PM)				
						2.79	⇒	4-24 HR FACT.	VEH / HR	VEH / 2HR	2 HR %		
									11-12 PM	969	2000	12.4%	
									12-1 PM	1031			
									2 HR PM (4 - 6 PM)				
									VEH / HR	VEH / 2HR	2 HR %		
									4-5 PM	1752	3243	20.1%	
									5-6 PM	1491			

West Saanich Rd between Royal Oak Dr and Markham St

Northbound

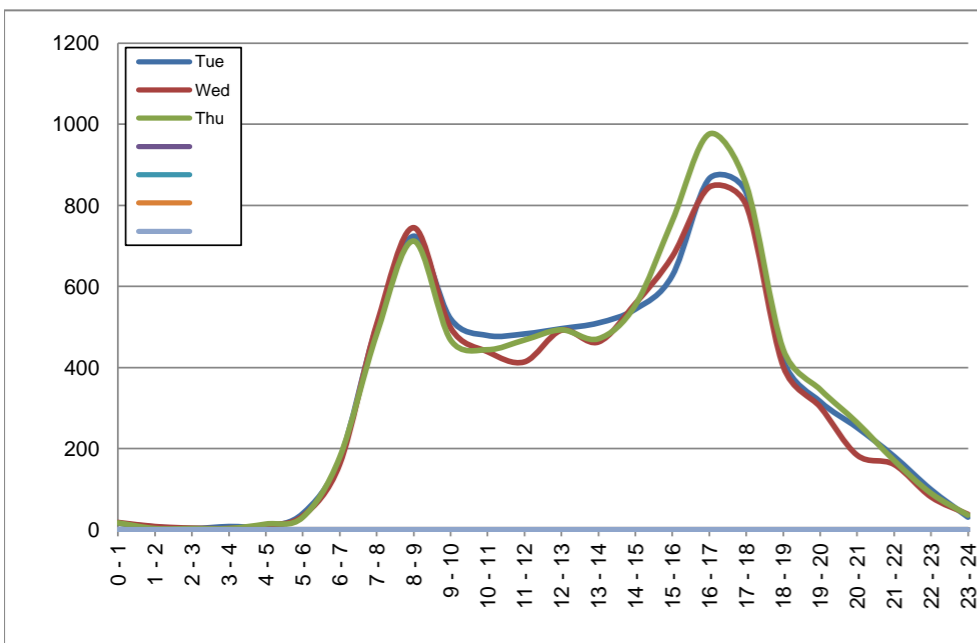
April 2, 2019 to April 4, 2019

Hourly Volumes

Time Period	Tue	Wed	Thu			
	Apr 2	Apr 3	Apr 4			
0 - 1	16	18	17			
1 - 2	7	8	3			
2 - 3	3	4	3			
3 - 4	8	3	3			
4 - 5	8	11	14			
5 - 6	40	34	31			
6 - 7	174	162	179			
7 - 8	502	507	483			
8 - 9	724	745	712			
9 - 10	520	498	468			
10 - 11	479	439	444			
11 - 12	483	414	468			
12 - 13	496	492	493			
13 - 14	510	463	471			
14 - 15	544	558	554			
15 - 16	627	674	762			
16 - 17	866	845	976			
17 - 18	831	800	851			
18 - 19	419	403	445			
19 - 20	316	303	346			
20 - 21	252	184	264			
21 - 22	181	161	171			
22 - 23	99	81	90			
23 - 24	31	38	36			
Day Total	8136	7845	8284			

15-Minute Volumes

Time Start	Tue	Wed	Thu				Time Start	Tue	Wed	Thu			
	Apr 2	Apr 3	Apr 4					Apr 2	Apr 3	Apr 4			
0:00	5	5	1				12:00	129	117	129			
0:15	4	6	10				12:15	127	128	129			
0:30	3	2	6				12:30	127	131	122			
0:45	4	5	0				12:45	113	116	113			
1:00	2	2	1				13:00	126	122	117			
1:15	1	2	2				13:15	120	92	121			
1:30	3	2	0				13:30	135	121	105			
1:45	1	2	0				13:45	129	128	128			
2:00	0	1	0				14:00	123	118	128			
2:15	0	1	0				14:15	130	153	148			
2:30	0	0	3				14:30	134	144	137			
2:45	3	2	0				14:45	157	143	141			
3:00	2	0	2				15:00	144	161	188			
3:15	2	0	0				15:15	144	183	178			
3:30	2	1	1				15:30	164	175	187			
3:45	2	2	0				15:45	175	155	209			
4:00	2	2	2				16:00	203	206	248			
4:15	1	4	1				16:15	221	203	231			
4:30	0	1	5				16:30	210	229	246			
4:45	5	4	6				16:45	232	207	251			
5:00	5	4	6				17:00	207	209	230			
5:15	6	7	5				17:15	230	207	211			
5:30	16	9	11				17:30	213	211	229			
5:45	13	14	9				17:45	181	173	181			
6:00	19	20	14				18:00	134	122	138			
6:15	35	29	36				18:15	116	120	107			
6:30	59	54	68				18:30	84	92	111			
6:45	61	59	61				18:45	85	69	89			
7:00	83	68	63				19:00	92	78	106			
7:15	125	104	112				19:15	72	81	104			
7:30	132	149	131				19:30	74	83	75			
7:45	162	186	177				19:45	78	61	61			
8:00	178	177	178				20:00	63	56	73			
8:15	209	197	186				20:15	66	43	82			
8:30	158	193	158				20:30	58	49	62			
8:45	179	178	190				20:45	65	36	47			
9:00	161	168	133				21:00	46	49	47			
9:15	108	133	107				21:15	56	38	45			
9:30	116	99	122				21:30	51	44	37			
9:45	135	98	106				21:45	28	30	42			
10:00	136	122	114				22:00	33	33	39			
10:15	115	106	127				22:15	30	22	28			
10:30	112	124	96				22:30	20	15	13			
10:45	116	87	107				22:45	16	11	10			
11:00	102	83	118				23:00	12	14	12			
11:15	116	97	108				23:15	2	10	8			
11:30	128	109	117				23:30	10	10	11			
11:45	137	125	125				23:45	7	4	5			



Site notes:

West Saanich Rd between Royal Oak Dr and Markham St

Southbound

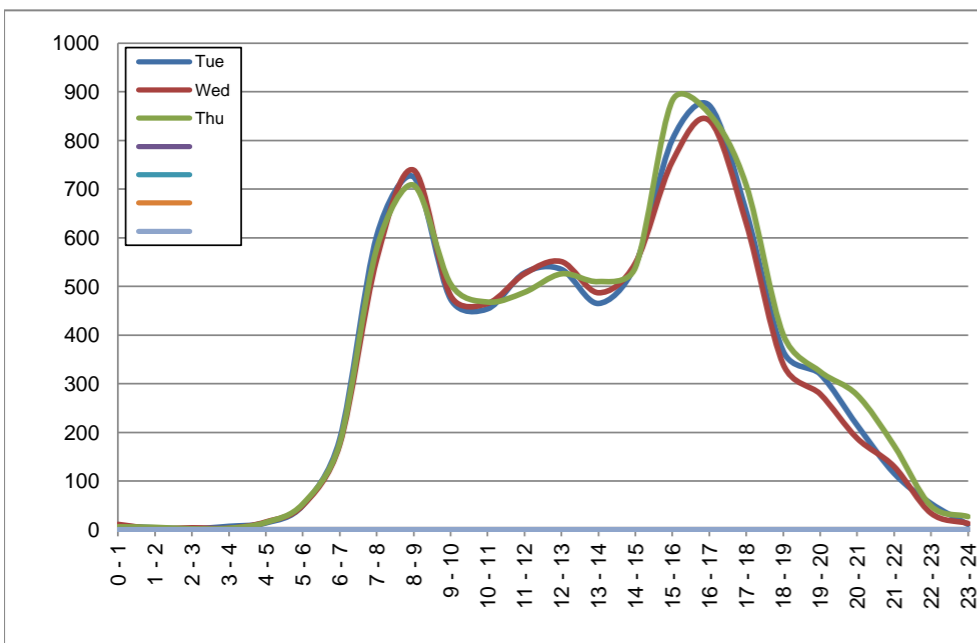
April 2, 2019 to April 4, 2019

Hourly Volumes

Time Period	Tue	Wed	Thu			
	Apr 2	Apr 3	Apr 4			
0 - 1	8	11	6			
1 - 2	4	2	5			
2 - 3	2	4	2			
3 - 4	7	3	3			
4 - 5	14	16	15			
5 - 6	50	50	53			
6 - 7	186	175	178			
7 - 8	604	556	578			
8 - 9	725	739	708			
9 - 10	474	481	505			
10 - 11	454	465	468			
11 - 12	528	526	488			
12 - 13	535	551	526			
13 - 14	465	487	510			
14 - 15	544	548	539			
15 - 16	802	757	882			
16 - 17	872	841	855			
17 - 18	654	630	708			
18 - 19	367	340	401			
19 - 20	320	279	325			
20 - 21	215	188	277			
21 - 22	116	130	173			
22 - 23	54	34	49			
23 - 24	11	13	27			
Day Total	8011	7826	8281			

15-Minute Volumes

Time Start	Tue	Wed	Thu				Time Start	Tue	Wed	Thu			
	Apr 2	Apr 3	Apr 4					Apr 2	Apr 3	Apr 4			
0:00	2	3	0				12:00	127	139	108			
0:15	2	2	4				12:15	137	160	158			
0:30	3	4	1				12:30	146	113	129			
0:45	1	2	1				12:45	125	139	131			
1:00	0	0	2				13:00	120	120	136			
1:15	1	0	0				13:15	114	112	118			
1:30	3	1	1				13:30	109	120	123			
1:45	0	1	2				13:45	122	135	133			
2:00	1	2	1				14:00	127	127	99			
2:15	1	2	0				14:15	147	126	147			
2:30	0	0	0				14:30	126	151	146			
2:45	0	0	1				14:45	144	144	147			
3:00	1	0	2				15:00	223	212	213			
3:15	2	0	0				15:15	196	171	190			
3:30	2	3	1				15:30	186	192	219			
3:45	2	0	0				15:45	197	182	260			
4:00	2	1	1				16:00	227	217	213			
4:15	2	2	4				16:15	213	204	224			
4:30	2	4	5				16:30	230	222	207			
4:45	8	9	5				16:45	202	198	211			
5:00	8	5	8				17:00	213	199	216			
5:15	6	11	11				17:15	185	163	215			
5:30	17	13	9				17:30	139	132	157			
5:45	19	21	25				17:45	117	136	120			
6:00	26	21	24				18:00	99	100	122			
6:15	32	36	34				18:15	93	85	100			
6:30	60	54	56				18:30	103	71	82			
6:45	68	64	64				18:45	72	84	97			
7:00	93	93	84				19:00	109	82	98			
7:15	136	117	135				19:15	75	69	97			
7:30	152	133	145				19:30	68	65	67			
7:45	223	213	214				19:45	68	63	63			
8:00	176	187	187				20:00	57	61	73			
8:15	193	184	193				20:15	60	41	73			
8:30	203	214	182				20:30	54	43	84			
8:45	153	154	146				20:45	44	43	47			
9:00	123	118	127				21:00	33	30	52			
9:15	129	140	125				21:15	38	33	42			
9:30	118	111	131				21:30	26	41	54			
9:45	104	112	122				21:45	19	26	25			
10:00	115	132	117				22:00	19	15	25			
10:15	113	125	123				22:15	16	5	7			
10:30	121	117	126				22:30	12	7	8			
10:45	105	91	102				22:45	7	7	9			
11:00	129	124	115				23:00	7	7	12			
11:15	127	106	107				23:15	1	2	2			
11:30	125	161	125				23:30	1	2	6			
11:45	147	135	141				23:45	2	2	7			



Site notes:

Vehicle Speed Summary

Saanich Engineering Department

Count Id: [M0040-10](#)

Filename: [West Saanich Rd between Royal Oak Dr and Markham St-Apr-2019.xlsm](#)

Location: West Saanich Rd between Royal Oak Dr and Markham St

Note: Royal Oak Dr and Markham St

Direction: **North-South**

Dates: **April 01, 2019 To April 05, 2019**

Filtered data

AVG. SPEED	35 mph	57 km/h
50 % SPEED	35 mph	57 km/h
85 % SPEED	39 mph	63 km/h
95 % SPEED	42 mph	68 km/h

Location Map



West Saanich Rd between Royal Oak Dr and Markham St

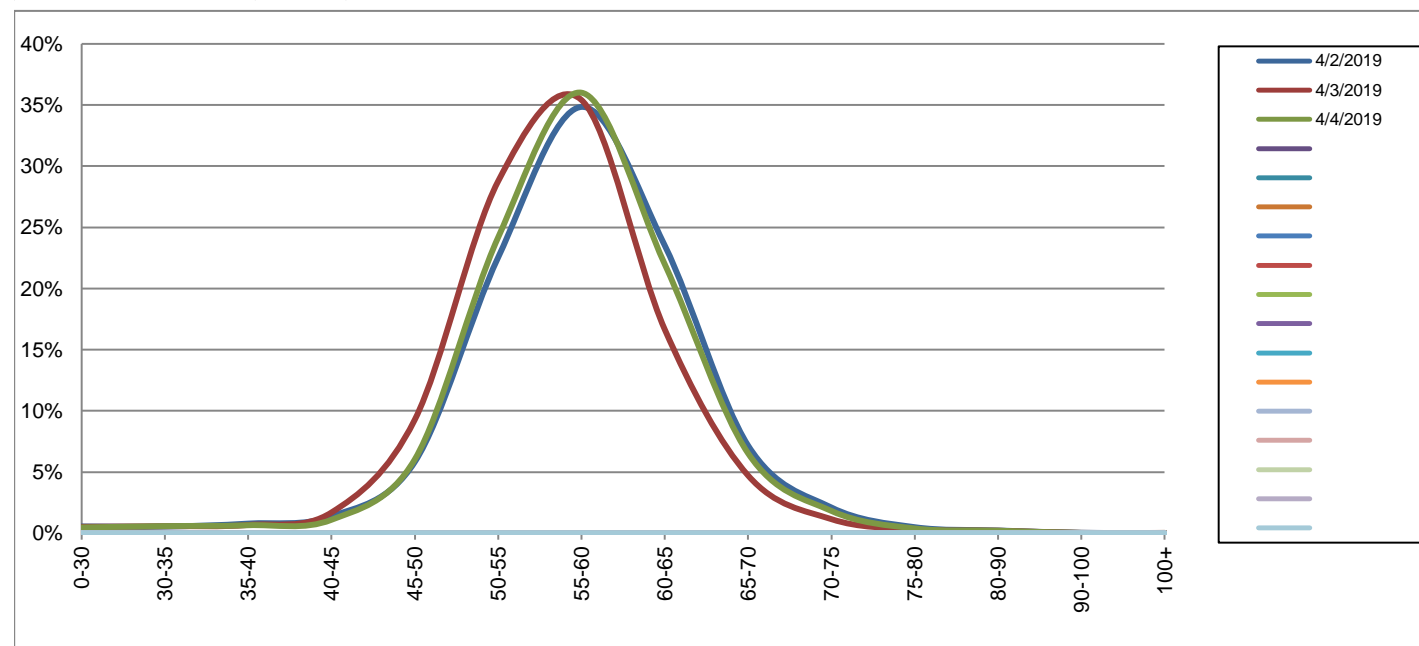
Northbound

April 2, 2019 to April 4, 2019

Daily Speed Bin Percentages															Daily Speed Bin Volumes														Total	Avg.
Bin #	1	2	3	4	5	6	7	8	9	10	11	12	13	14	1	2	3	4	5	6	7	8	9	10	11	12	13	14	Volume	Speed
Bin Speeds	0-30	30-35	35-40	40-45	45-50	50-55	55-60	60-65	65-70	70-75	75-80	80-90	90-100	100+	0-30	30-35	35-40	40-45	45-50	50-55	55-60	60-65	65-70	70-75	75-80	80-90	90-100	100+		
4/2/2019	0.6%	0.5%	0.8%	1.4%	5.8%	22.5%	34.8%	23.5%	7.2%	2.1%	0.5%	0.2%	0.0%	0.0%	45	44	64	112	474	1834	2835	1913	583	171	40	18	3	0	8136	57
4/3/2019	0.5%	0.6%	0.7%	1.7%	9.3%	28.8%	35.4%	16.6%	4.7%	1.1%	0.3%	0.2%	0.0%	0.0%	41	45	53	133	728	2257	2778	1306	370	90	24	16	2	2	7845	56
4/4/2019	0.5%	0.6%	0.7%	1.1%	6.0%	24.2%	36.0%	22.0%	6.5%	1.8%	0.4%	0.2%	0.0%	0.0%	39	48	54	91	500	2003	2983	1821	541	151	32	17	2	2	8284	57
Total	0.5%	0.6%	0.7%	1.4%	7.0%	25.1%	35.4%	20.8%	6.2%	1.7%	0.4%	0.2%	0.0%	0.0%	125	137	171	336	1702	6094	8596	5040	1494	412	96	51	7	4	24265	57

Speed Data Summary

Bin #	1	2	3	4	5	6	7	8	9	10	11	12	13	14	Total
Bin Speeds	0-30	30-35	35-40	40-45	45-50	50-55	55-60	60-65	65-70	70-75	75-80	80-90	90-100	100+	
Survey Total	125	137	171	336	1702	6094	8596	5040	1494	412	96	51	7	4	24265
% Total	0.5%	0.6%	0.7%	1.4%	7.0%	25.1%	35.4%	20.8%	6.2%	1.7%	0.4%	0.2%	0.0%	0.0%	100%
Accumulated %	0.5%	1.1%	1.8%	3.2%	10.2%	35.3%	70.7%	91.5%	97.7%	99.3%	99.7%	100.0%	100.0%	100%	
Inverse Accum. %	99.5%	98.9%	98.2%	96.8%	89.8%	64.7%	29.3%	8.5%	2.3%	0.7%	0.3%	0.0%	0.0%	0.0%	
Average Speed	57 KM/H														



Site notes:

West Saanich Rd between Royal Oak Dr and Markham St

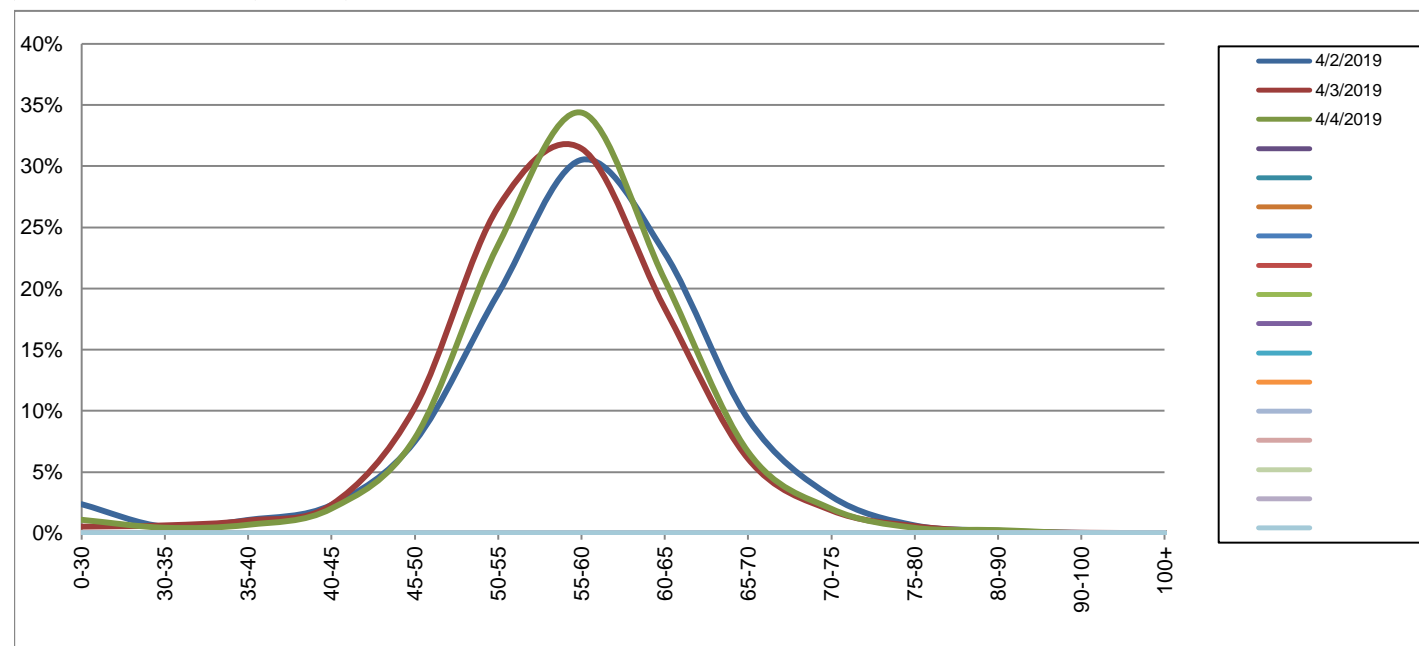
Southbound

April 2, 2019 to April 4, 2019

Daily Speed Bin Percentages															Daily Speed Bin Volumes														Total	Avg.
Bin #	1	2	3	4	5	6	7	8	9	10	11	12	13	14	1	2	3	4	5	6	7	8	9	10	11	12	13	14	Total	Avg.
Bin Speeds	0-30	30-35	35-40	40-45	45-50	50-55	55-60	60-65	65-70	70-75	75-80	80-90	90-100	100+	0-30	30-35	35-40	40-45	45-50	50-55	55-60	60-65	65-70	70-75	75-80	80-90	90-100	100+	Volume	Speed
4/2/2019	2.4%	0.5%	1.1%	2.3%	7.5%	19.6%	30.5%	22.9%	9.3%	3.0%	0.6%	0.2%	0.0%	0.0%	190	42	87	185	601	1569	2445	1834	748	241	51	16	2	0	8011	57
4/3/2019	0.5%	0.6%	1.0%	2.3%	10.3%	26.7%	31.4%	18.4%	6.1%	1.9%	0.6%	0.1%	0.0%	0.0%	42	50	81	182	804	2086	2461	1438	476	146	45	11	3	1	7826	56
4/4/2019	1.1%	0.4%	0.7%	2.0%	7.8%	23.6%	34.4%	20.7%	6.7%	2.0%	0.4%	0.3%	0.0%	0.0%	91	37	57	167	643	1951	2847	1714	551	165	36	21	0	1	8281	57
Total	1.3%	0.5%	0.9%	2.2%	8.5%	23.2%	32.1%	20.7%	7.4%	2.3%	0.5%	0.2%	0.0%	0.0%	323	129	225	534	2048	5606	7753	4986	1775	552	132	48	5	2	24118	57

Speed Data Summary

Bin #	1	2	3	4	5	6	7	8	9	10	11	12	13	14	Total
Bin Speeds	0-30	30-35	35-40	40-45	45-50	50-55	55-60	60-65	65-70	70-75	75-80	80-90	90-100	100+	Total
Survey Total	323	129	225	534	2048	5606	7753	4986	1775	552	132	48	5	2	24118
% Total	1.3%	0.5%	0.9%	2.2%	8.5%	23.2%	32.1%	20.7%	7.4%	2.3%	0.5%	0.2%	0.0%	0.0%	100%
Accumulated %	1.3%	1.9%	2.8%	5.0%	13.5%	36.8%	68.9%	89.6%	96.9%	99.2%	99.8%	100.0%	100.0%	100%	
Inverse Accum. %	98.7%	98.1%	97.2%	95.0%	86.5%	63.2%	31.1%	10.4%	3.1%	0.8%	0.2%	0.0%	0.0%	0.0%	
Average Speed	57 KM/H														



Site notes:

West Saanich Rd between Royal Oak Dr and Markham St

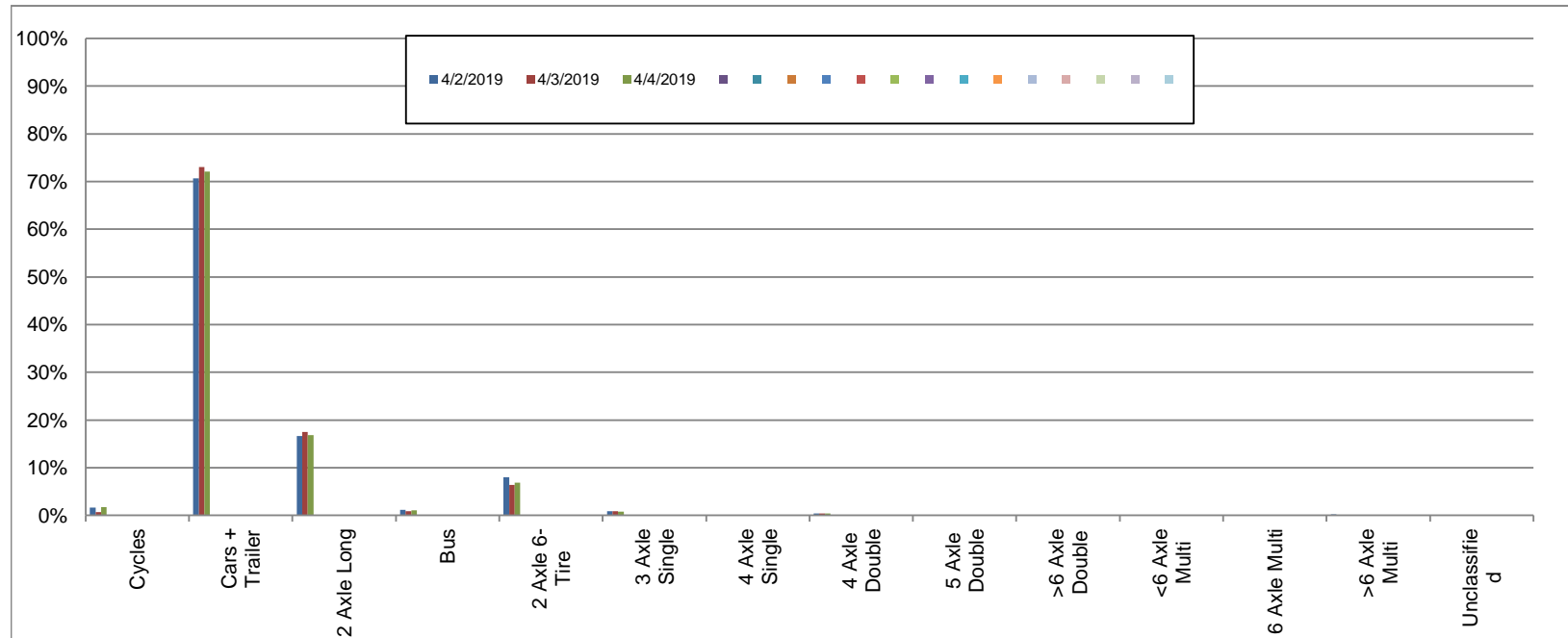
Northbound

April 2, 2019 to April 4, 2019

Daily Class Bin Percentages															Daily Class Bin Volumes											Total Volume			
Bin #	1	2	3	4	5	6	7	8	9	10	11	12	13	14	1	2	3	4	5	6	7	8	9	10	11		12	13	14
Bin Class	Cycles	Cars + Trailer	2 Axle Long	Bus	2 Axle 6-Tire	3 Axle Single	4 Axle Single	4 Axle Double	5 Axle Double	>6 Axle Double	<6 Axle Multi	6 Axle Multi	>6 Axle Multi	Unclassified	Cycles	Cars + Trailer	2 Axle Long	Bus	2 Axle 6-Tire	3 Axle Single	4 Axle Single	4 Axle Double	5 Axle Double	>6 Axle Double	<6 Axle Multi	6 Axle Multi	>6 Axle Multi	Unclassified	
4/2/2019	1.7%	70.7%	16.6%	1.2%	8.0%	0.9%	0.1%	0.4%	0.1%	0.1%	0.0%	0.0%	0.2%	0.1%	136	5752	1351	94	650	74	8	35	11	5	0	0	15	5	8136
4/3/2019	0.7%	73.0%	17.5%	0.9%	6.4%	0.9%	0.1%	0.4%	0.1%	0.1%	0.0%	0.0%	0.0%	0.1%	55	5728	1371	70	499	71	4	28	4	5	0	0	0	10	7845
4/4/2019	1.7%	72.1%	16.8%	1.0%	6.8%	0.8%	0.0%	0.4%	0.1%	0.1%	0.0%	0.0%	0.0%	0.1%	144	5970	1391	85	566	68	2	33	7	8	0	0	1	9	8284
Total	1.4%	71.9%	17.0%	1.0%	7.1%	0.9%	0.1%	0.4%	0.1%	0.1%	0.0%	0.0%	0.1%	0.1%	335	17450	4113	249	1715	213	14	96	22	18	0	0	16	24	24265

Class Data Summary

Bin #	1	2	3	4	5	6	7	8	9	10	11	12	13	14	Total Volume
Bin Class	Cycles	Cars + Trailer	2 Axle Long	Bus	2 Axle 6-Tire	3 Axle Single	4 Axle Single	4 Axle Double	5 Axle Double	>6 Axle Double	<6 Axle Multi	6 Axle Multi	>6 Axle Multi	Unclassified	Total Volume
Survey Total	335	17450	4113	249	1715	213	14	96	22	18	0	0	16	24	24265
% Total	1.4%	71.9%	17.0%	1.0%	7.1%	0.9%	0.1%	0.4%	0.1%	0.1%	0.0%	0.0%	0.1%	0.1%	100%
Accumulated %	1.4%	73.3%	90.2%	91.3%	98.3%	99.2%	99.3%	99.7%	99.8%	99.8%	99.8%	99.8%	99.9%	100.0%	
Inv. Accum. %	98.6%	26.7%	9.8%	8.7%	1.7%	0.8%	0.7%	0.3%	0.2%	0.2%	0.2%	0.2%	0.1%	0.0%	



Classification Descriptions

Bin #	Bin Description
1	Motorcycles
2	Passenger cars, including those with recreational trailers
3	2-axle pick-ups, vans, and RVs, including those with recreational trailers
4	Buses
5	2-axle, 6-tire single units
6	3-axle single units
7	4-axle single units
8	3-axle or 4-axle double unit
9	5-axle double unit
10	6-, 7-, or 8-axle double unit
11	5-axle multiple unit
12	6-axle multiple unit
13	7-or-more-axle multiple unit
14	Vehicles that could not be classified

Site notes:

West Saanich Rd between Royal Oak Dr and Markham St

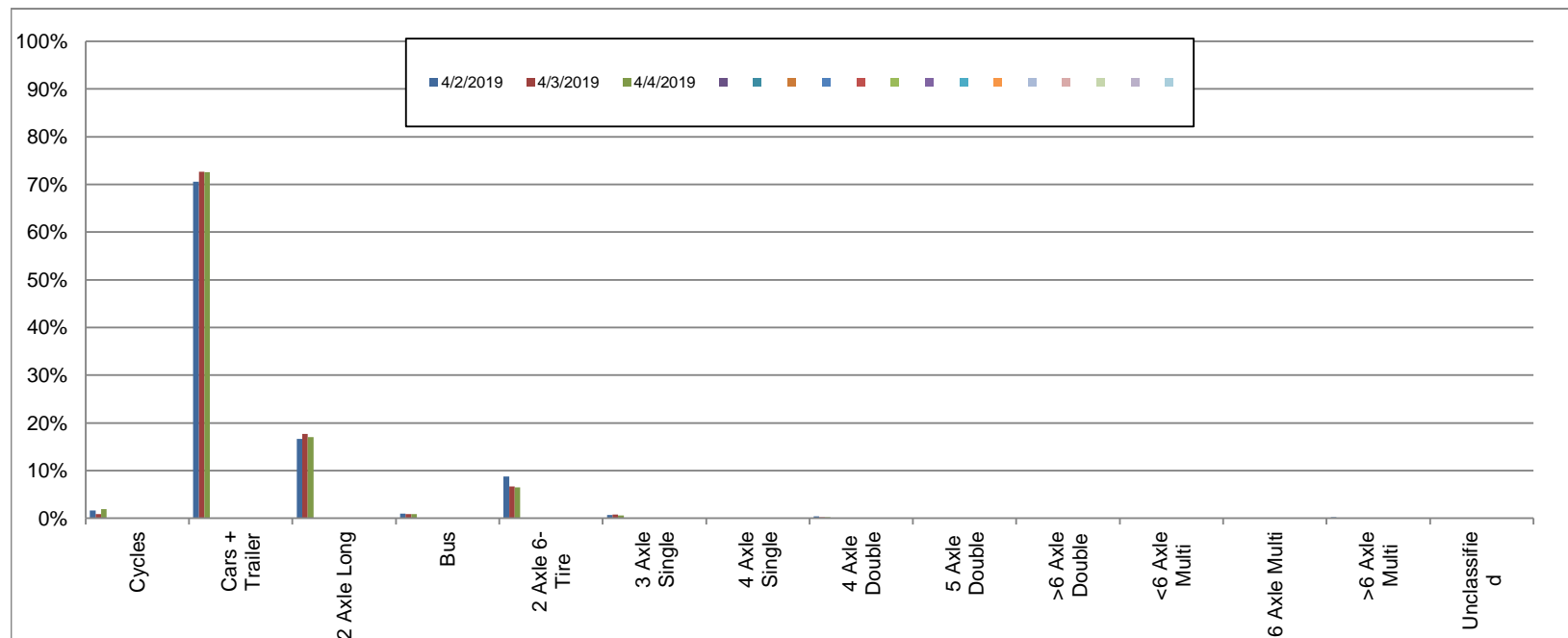
Southbound

April 2, 2019 to April 4, 2019

Daily Class Bin Percentages															Daily Class Bin Volumes											Total Volume			
Bin #	1	2	3	4	5	6	7	8	9	10	11	12	13	14	1	2	3	4	5	6	7	8	9	10	11		12	13	14
Bin Class	Cycles	Cars + Trailer	2 Axle Long	Bus	2 Axle 6-Tire	3 Axle Single	4 Axle Single	4 Axle Double	5 Axle Double	>6 Axle Double	<6 Axle Multi	6 Axle Multi	>6 Axle Multi	Unclassified	Cycles	Cars + Trailer	2 Axle Long	Bus	2 Axle 6-Tire	3 Axle Single	4 Axle Single	4 Axle Double	5 Axle Double	>6 Axle Double	<6 Axle Multi	6 Axle Multi	>6 Axle Multi	Unclassified	
4/2/2019	1.6%	70.6%	16.6%	1.0%	8.8%	0.7%	0.1%	0.3%	0.0%	0.1%	0.0%	0.0%	0.2%	0.1%	129	5653	1330	77	701	54	8	28	3	9	0	0	14	5	8011
4/3/2019	0.9%	72.7%	17.7%	0.9%	6.7%	0.7%	0.0%	0.2%	0.1%	0.1%	0.0%	0.0%	0.0%	0.0%	67	5690	1387	68	522	58	2	19	4	7	0	0	0	2	7826
4/4/2019	2.0%	72.6%	17.0%	0.9%	6.5%	0.6%	0.0%	0.2%	0.0%	0.1%	0.0%	0.0%	0.0%	0.1%	162	6012	1410	73	535	47	3	19	4	8	0	0	0	8	8281
Total	1.5%	72.0%	17.1%	0.9%	7.3%	0.7%	0.1%	0.3%	0.0%	0.1%	0.0%	0.0%	0.1%	0.1%	358	17355	4127	218	1758	159	13	66	11	24	0	0	14	15	24118

Class Data Summary

Bin #	1	2	3	4	5	6	7	8	9	10	11	12	13	14	Total Volume
Bin Class	Cycles	Cars + Trailer	2 Axle Long	Bus	2 Axle 6-Tire	3 Axle Single	4 Axle Single	4 Axle Double	5 Axle Double	>6 Axle Double	<6 Axle Multi	6 Axle Multi	>6 Axle Multi	Unclassified	Total Volume
Survey Total	358	17355	4127	218	1758	159	13	66	11	24	0	0	14	15	24118
% Total	1.5%	72.0%	17.1%	0.9%	7.3%	0.7%	0.1%	0.3%	0.0%	0.1%	0.0%	0.0%	0.1%	0.1%	100%
Accumulated %	1.5%	73.4%	90.6%	91.5%	98.7%	99.4%	99.5%	99.7%	99.8%	99.9%	99.9%	99.9%	99.9%	100.0%	
Inv. Accum. %	98.5%	26.6%	9.4%	8.5%	1.3%	0.6%	0.5%	0.3%	0.2%	0.1%	0.1%	0.1%	0.1%	0.0%	



Classification Descriptions

Bin #	Bin Description
1	Motorcycles
2	Passenger cars, including those with recreational trailers
3	2-axle pick-ups, vans, and RVs, including those with recreational trailers
4	Buses
5	2-axle, 6-tire single units
6	3-axle single units
7	4-axle single units
8	3-axle or 4-axle double unit
9	5-axle double unit
10	6-, 7-, or 8-axle double unit
11	5-axle multiple unit
12	6-axle multiple unit
13	7-or-more-axle multiple unit
14	Vehicles that could not be classified

Site notes: